

# Swindon Town Football Club



Official Programme 5np 1/-



**Swindon Town v Leicester City**

First-hand

Lively

Reports

Complete

Comprehensive

Coverage

Close-up Action

Shots

Every Game

At home or away

**The Evening Advertiser**

has it covered

# ***M'ILROYS***

**FULLY LICENSED  
RESTAURANT**

**FOR THE BEST-VALUE LUNCH IN TOWN  
OPEN ALL DAY SATURDAY**

*MORNING COFFEE  
LUNCHEON  
AFTERNOON TEA  
SILVER-GRILL SERVICE*

Private room for meetings, private luncheons and dinners, celebrations

McILROYS · REGENT STREET · SWINDON 5294

# Swindon Town Football Company Limited

Registered Office County Ground, Swindon

President W J Castle

Vice-Presidents J Davies H Williams

**Directors**

Chairman H E Lane

Vice-Chairman R Fricker

F L Collings A W Done M Earle C J Green

F Plyer K H Wilmer Dr J Nicholas and T Beales

General Manager R A Morse

Secretary R J Jefferies

Team Manager F Ford

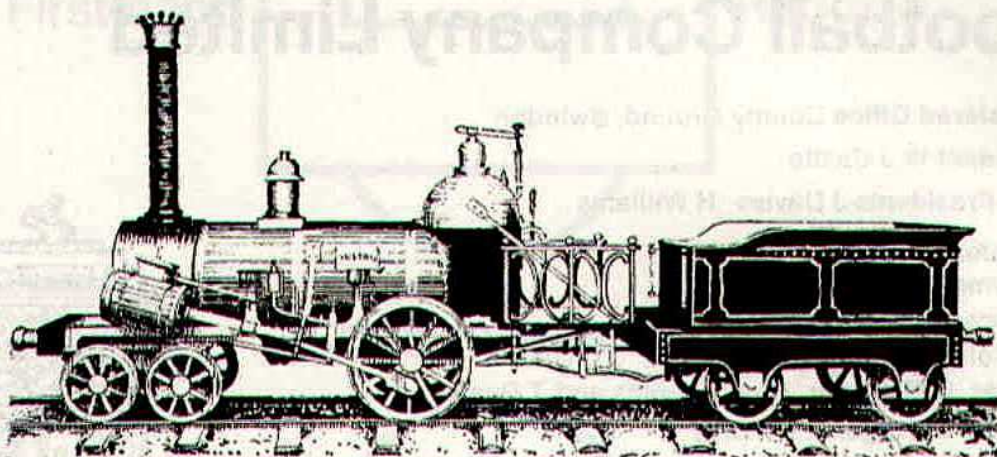


Saturday, 13th March, 1971 - Division II

## Swindon Town v Leicester City

Kick-off 3 p.m.

Swindon Town	OFFICIALS	Leicester City
1 Downsborough	<b>REFEREE</b>	1 Shilton
2 Thomas	Mr C H Nicholls	2 Whitworth
3 Trollope	Plymouth	3 Nish
4 Butler		4 Kellard
5 Burrows		5 Sjoberg
6 Harland		6 Cross
7 Peplow		7 Farrington
8 Gough		8 Brown
9 Horsfield	<b>LINESMEN</b>	9 Fern
10 Noble	<b>Red Flag:</b>	10 Carlin
11 Rogers	Mr A R Lees	11 Glover
12	Somerset	12
Colours:	<b>Yellow Flag:</b>	Colours:
Red and White	Mr R Dunford	Blue
	Neath	



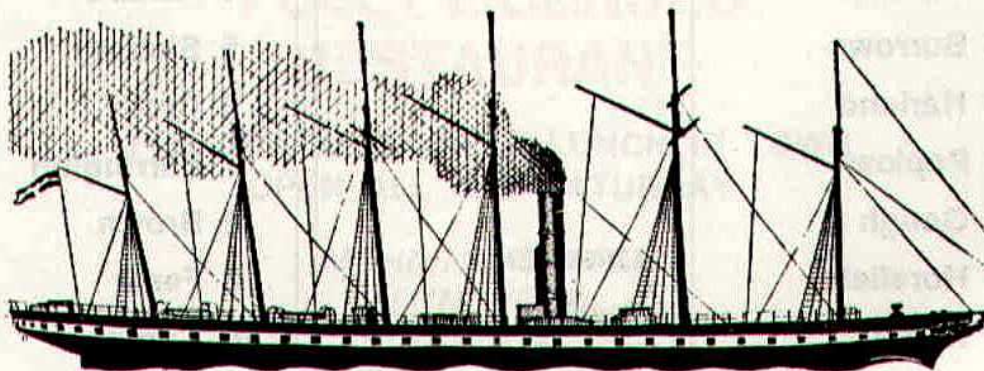
**MADE IN 1843!**

the year that ARKELL'S BREWERY and Swindon's  
G.W.R. Works were founded.

# ARKELLS THE LOCAL BREW!

Time honoured by 127 years.

*GOOD HONEST BEER  
IN  
DELIGHTFUL LICENSED HOUSES*



*"S.S. GREAT BRITAIN"*

built at Bristol in 1843. Designed by the younger Brunel, she was  
the first large vessel to be built of iron and the first screw  
steamship to cross the Atlantic. Her speed was about 12 knots.

# news & views

It is with real pleasure we welcome to the County Ground one of the finest footballing teams in the country. The game this afternoon is a most important one for Leicester City. Still in the F.A. Cup - they replay their 6th Round tie at Highbury on Monday - but their sights are very much on promotion. To date they occupy fourth position in the League table with 38 points from 29 games, two less than the leaders, Cardiff City, but with a game in hand. Their away record is very good having won five and drawn five of the fourteen played on opponents' grounds. The visit of Leicester last season produced a splendid game, watched by a fine crowd of 22,310. Peter Noble scored ten minutes after half-time, but Len Glover equalised nine minutes from the end of the match. Later in the season, 17th January 1970, Swindon won a fine victory at Filbert Street by two goals (Horsfield 2) to nil. This was by far the best display given by Swindon up to that date. Leicester, then still very much in the running for promotion, exerted great pressure in the second half, but Swindon were worthy winners before a gate of 24,378.

This season Swindon visited Leicester on 14th November 1970, and after an excellent game were defeated 1-3, so we shall be all the keener to reverse that score-line today.

Leicester City have a wonderful F.A. Cup record. Since 1960 they have played 43 cup-ties against Arsenal's 28. Only Manchester United (44) have played more, Tottenham having played the same number as Leicester. In addition they have appeared at Wembley on four occasions. In 1949 they lost to Wolves 1-3, in 1961 lost 0-2 to Spurs, who thus completed the double. In 1963 Leicester were defeated 1-3 by Manchester United, and in 1969 lost 0-1 to Manchester City. On Monday they meet Arsenal to decide who shall play Stoke in the semi-final. We wish them the best of luck, and may they go forward this time to be Cup Final winners.

In addition to their exploits and achievements in the F.A. Cup competition, Leicester have experienced quite

a see-saw period. In 1954 they were promoted from Division 2 only to be relegated the following season. In 1957 they again won promotion to Division 1. However, in 1969 they received a double disappointment, being defeated in the Cup Final and relegated to Division 2.

They are, however, again very much on the crest of the wave, still in the F.A. Cup, and challenging for Division 1 status.

It is evident from their record that Leicester have much talent. Long-serving players like David Nish, Rodney Fern, Graham Cross, John Sjoberg, and Peter Shilton form a nucleus, but Leicester have spent the £165,000 obtained for the transfer of Allan Clarke, on players of drive, skill and aggression: Bobby Kellard, Willie Carlin, Malcolm Partridge (from Mansfield), Joe Jopling (Aldershot), and John Farrington (Wolves). Full-back Jopling has failed to obtain a first-team place due to the excellent form of local discovery, 18-year-old Steve Whitworth.

At the moment, at least seven clubs are in the running for promotion, with several others (including ourselves) on the fringe. What interest and enthusiasm would be displayed if only we had the long sought after four up and four down. It seems certain that gates would be much higher. Clubs are always seeking ways and means of increasing income and this move would surely produce much more revenue, as instanced in our game at Middlesbrough last week. Almost twenty-one thousand spectators turned up to witness the game, because the home club has 38 points and is literally in third position. Birmingham City, now enjoying a fine run and going forward to a position challenging for promotion, drew a crowd of 27,605, by far the highest gate in Division 2.

# THE GREAT WESTERN HOTEL

(OPPOSITE SWINDON RAILWAY STATION)

The business man's hotel with a top class  
steak bar too!

Specialists in  
LUNCHEONS and DINNERS  
WEDDING PARTIES and RECEPTIONS  
good food — quick service

**J. ARKELL and SONS LIMITED Telephone SWINDON 22047**

## Mills and Merricks Limited

**16-17 Bridge Street Swindon**

Telephone 5365/6

*Please watch this space  
for further announcements*

### **New City Office Supplies Limited**

Office and Stationery Suppliers  
to Industry and Commerce  
6 Commercial Road, Swindon  
Telephone Swindon (STD Code 0793) 4605



## CLARK BROS. (Swindon) LTD

Building and Civil Engineering Contractors

CONSULT US FOR  
BUILDING AND CIVIL ENGINEERING  
CONSTRUCTION IN ALL ITS PHASES

**STRATTON ROAD**

**SWINDON**

Telephone Swindon 27261

# Supporters club notes

## Anglo-Italian Inter-League Club Competition

Now that the draw has been made for the above Competition, and we know who and where Swindon will be playing in Italy, plans are now well on the way to provide facilities for supporters who wish to go to Italy.

The matches against Bologna and Sampdoria (Genoa) were arranged for Wednesday, 2nd and Saturday 5th June respectively. The latest information would suggest, however, that these dates will be changed to Tuesday, 1st and Friday, 4th. This is due to an Italian International match on Saturday, 5th, which will have nation-wide television coverage, and would probably affect the gate money at any other match.

This does not affect the supporters already booked on the 15-day holiday which covers both matches - and also the cup final, should Swindon reach it again. There has been a change here, however. The Travel Company through whom arrangements were made, have been obliged to cancel the Bristol Airport tour, as arranged, and those booked will, no doubt, be pleased to know that the alternative holiday offered is perhaps even more attractive. It will now be located at Lido de Jesolo, Venice, with all the facilities and sights of this beautiful and ancient city available after the matches. Accommodation will be the same as the original tour, and as this change is at the Company's request, there will be no extra charge. There are now a few more places available, and anyone interested in this Venetian and football holiday should get their seats booked **at once**.

Two day trips are envisaged, should demand warrant it. Obviously this will depend on more or less full aircraft. Options have been secured on jet aircraft for these day trips, and the cost will be based, as for last year, on a complete all-in trip, all coach, air, match ticket, insurance and airport tax included, at not exceeding £22.00 per person. It is anticipated that the Bologna match flight will be to Venice Airport and we hope to include time for a few hours to be available for sight-seeing in Venice, before going on to Bologna.

The second flight will be to Genoa Airport, with plenty of time to sight-see in this ancient city and port. To book for any of the above three ventures, contact PATRICK TRAVEL, 32 Havelock Street, Swindon, telephone Swindon 21262. A deposit of £5.00 only is required, returnable if, through lack of support, either of the day flights have to be cancelled.

Insurance against illness etc. is in force from the time of booking.

It has not been possible to arrange an economic 8-day holiday.

**Grand National Draw** - Draw tickets for the above Draw should be returned to the Promoter, Mr. Phil Hart, today, or as soon as possible.

The Draw will take place next Saturday, the 20th March, in the Supporters' Club H.Q. after the match. Anyone who would like to see the draw made is cordially invited to call in and see it.

**Supporters' Club, Chippenham Branch** - Those of you in the Chippenham area, or in Swindon, are reminded that this Branch is holding the first Dance tonight at the Neeld Hall, Chippenham. Two bands, with refreshments included, and tickets are 15/- each. Contact Nobby Swatton, or Mrs. Barbara Ranger, in the Social Club, for tickets and a seat in the Swindon coach, if available, before or after the match today.

**Social Club Tote Results** - Sunday, 28th February. Winning number 6 and 24. Four winning tickets - Nos. 7580 : 5185 9049 and 7626 share £42.00. Sunday, 7th March. Winning numbers 19 and 28. Three winning tickets - Nos. 8245 : 8338 8700 share £42.00.

On the 4th March, 1931, the Swindon Town Supporters' Club was formed - 40 years ago. To mark this occasion, there will be a **Dance and Social Evening** in the Social Club, on Tuesday, 23rd March. Admission for Supporters' Club members, **not also Social Club members**, will be 15p, on production of their Supporters' Club membership card.

Peter Downsborough and Joe Butler wish to thank the supporters very much for the two collections made for their benefit. Each collection was just under £178.00 and cheques for the round amount have been presented.

## CECIL GREEN

---

Artistic Decorations in all its branches

**12 Armstrong Street  
Swindon Wilts**  
Telephone 4593

## C. Goodenough and Sons

---

Removal and Storage Contractors  
any distance

---

**25 Cricklade Street Swindon**  
Telephone 4555 and 3855

## G. A. Streetly

---

Tobacconist and Confectioner

---

**10 BOURNE ROAD  
MOREDON SWINDON**  
Telephone 4956

## W. J. SELWOOD

---

Telephone Swindon 5884

---

### Saddlery

General Leather Goods Manufactured and  
Repaired to Your Individual Requirements

**103 BROAD STREET  
SWINDON WILTSHIRE**

## Notton's Cafe

### COUNTY ROAD

Cliff and Grace Hayward  
200 yards from Ground

---

**Snack and Grill Service  
all day**

For High Class  
Central Heating, Plumbing  
Painting and Decorating  
Electrical Installations  
and Repairs

## NORTH WILTS Sanitary and Heating Co. Ltd.

**NEWPORT STREET SWINDON**  
Telephone 5373/4



THE ALCOHOL FUEL

### COATE GARAGE

REPAIRS - OVERHAULS - WELDING  
SERVICING - REBORING - TYRES

Props. E. V. & W. H. Mattick  
Marlborough Road Swindon

## Leese, Ing & Co. Ltd.

Mineral Water and  
Squash Manufacturers

---

**LANSDOWN ROAD SWINDON**  
Telephone 22744

## Maylott Studios

For Group and Sports Photographs  
Official Photographer to  
Swindon Town Football Club

**31 Faringdon Road**  
Telephone 22792

Always at your service

## L. Bibby

For all Types — Rags, Iron and Metal, etc.  
Spot Cash Paid. Please Telephone 2101  
and our van will call.

---

**THE PADDOCK ERMIN STREET  
STRATTON ST. MARGARET**



# **our visitors**

## **Leicester City**



### **Rodney Fern**

From Burton on Trent. Played with Nish in same local side at Measham. Signed 12.12.66, debut 3.2.68. 1969 Cup Finalist. 5ft 9½in. 11st 11lb.

### **John Farrington**

Winger. Signed from Wolves 14.10.69. Native from Lynemouth, Northumberland. Debut 18.10.69. 5ft 10in. 10st 6lb.

### **John Sjoberg**

Came in August 1958 from Banks O' Dee, Aberdeen, making him the City's longest serving player. League debut October 1960. Played in 1963 Cup Final, but missed 1969 Final through injury. 5ft 11in. 12st 3lb.

### **Alan Woollett**

Leicester born, signed 1.7.64. Debut April 1967. Cup Finalist. 5ft 10½in. 11st 5lb.

### **Alistair Brown**

From Musselburgh, Scotland. Signed 13.4.68. Scored twice in 2—1 win on debut against Sunderland, May 1969. 5ft 11in. 11st 8lb.

### **Len Glover**

Winger signed from Charlton at £80,000 in November 1967. Debut same month. Cup Finalist 1969. Is from Kennington, London. 5ft 9½in. 10st 9lb.

### **Malcolm Manley**

Paisley born from Johnstone Burgh. League debut April 1968 at 18. Played as substitute in 1969 Cup Final. 5ft 11½in. 11st 7lb.

### **Peter Shilton**

At 16, the youngest player to play for the City in first-class football, against Everton in the 1965-66 season. Capped at Schools, Youth and England Under-23 levels, he was called up for England's South American tour of 1969 and played against a Mexican XI. Signed 29.6.66. 6ft. 12st 6lb. Leicester born. Cup Finalist 1969.

### **Colin Mackleworth**

From Bow, London. Signed from West Ham United 24.11.67. Debut at Rotherham in F.A. Cup, March 1968. 5ft 11in. 13st.

### **Billy Houghton**

Signed by City from Ipswich Town 23.7.69. Youth cap, from Hemsworth, Yorkshire. After nine years with Barnsley, joined Watford at £10,000 in 1964. 5ft 9½in. 12st 6lb.

### **Paul Matthews**

Leicester born man found in schools football. Signed 28.8.63. Debut April 1965. 5ft 9in. 10st 5lb.

### **Graham Cross**

Leicester schools product, very versatile, he occupied eight different positions in first two seasons, having signed 21.11.60, making debut at 17 in April 1961. Played in 1963 and 1969 Cup Finals. Was Leicestershire all-rounder in cricket. 5ft 11½in. 12st 10lb.

### **David Nish**

From Measham, Leicestershire. At 21 was youngest ever City captain, from December 1968, and youngest Cup Final skipper, 1968. Signed July 1966. An England Youth Cap. Debut 3.12.66. 5ft 10½in. 11st 11lb.

## CARTER BROS. OF SWINDON

Car Radio  
Specialists

**AND NORTH WILTS RENTALS**

Hi-Fi Sales  
and Service

**FOR THE FINEST IN TELEVISION**  
To purchase or for rental

Personal and courteous attention : The finest after sales service in Town  
One of the few really Private Firms **Staunch supporters of the Town**  
**18 Lagos Street Swindon Telephone 6640 or 23270**

## THE PORK SHOP

(Swindon Bacon Curing Co. Ltd.)

Specialists in

**Bacon - Pork - Cooked Ham**

**50 FLEET STREET SWINDON**

Telephone 22122

## J. WILMER

Coal Merchants

**St. Margaret's Road Swindon**

Telephone 22535

## SOUTHERN LAUNDRY CO. LTD.

Launderers and Dry Cleaners

**HAYDON STREET SWINDON**

Telephone 4161

At Your Service

## A. E. LUDLOW LIMITED

Wholesale Fruit and Potato Merchant

**COLBOURNE STREET  
SWINDON WILTSHIRE  
Telephone Swindon 3583**

We deliver Fresh Fruit, Vegetables  
and Potatoes daily—**Wholesale Only**

## BRETTS

**PET and GARDEN SUPPLIES**

**32-33 Commercial Road  
and  
6 Cromwell Street Swindon**

For Paints of Good Quality

*H. S. Hodges & Sons*

(SWINDON) LTD.

**Cricklade Road Swindon  
Telephone 22422**

Dulux, Brolac, Valspar, Wallcharm, etc.

## Borough Press Swindon Limited

Eastcott Hill Swindon telephone 4022

*Printers to successful industry*

# Special attraction

On the 30th March the Roger Smart and John Trollope Testimonial evening will take place, this occasion being celebrated by the staging of two attractive matches and we would ask you to come along and show your appreciation to these two players for their loyal service, at the same time enjoying a full evening's entertainment. The first match will be of special interest to the ladies, be they football fans or not, as this will feature the Top Ten Eleven with such names as Ed Stewart, Troy Dante, David Hamilton and Terry Downes appearing whilst for the football purists Ernie Hunt, Mike Summerbee, Mel Nurse and Bobby Woodruff will be amongst the names appearing for the ex-Swindon Town Eleven.

For your entertainment at our usual Division 2 prices.

**Ex-Swindon Town Eleven**

**v**

**The Top Ten Eleven**

**kick-off 7 p.m.**

**Swindon Town**

**v**

**Stoke City**

**kick-off 8 p.m.**

Following these games a dance, including buffet dinner, will take place at McIlroys of Regent Street. Purchase your ticket, price 25/-, at the Football Club Ticket Office or the Supporters' Club Social Club at the conclusion of this match and ensure that you can join the big names from the entertainment world at this once-in-a-lifetime function.

# Fixture list 1970/71

## DIVISION II

### August

15	Hull City	(H) 1—1
19	League Cup (1)	.....
22	Sheffield United	(A) 1—2
29	Sunderland	(H) 2—0

### September

1	Watford	(H) 1—1
5	Blackburn Rovers	(A) 0—1
8	League Cup (2) Watford	(H) 4—2
12	Portsmouth	(H) 2—1
19	Carlisle United	(A) 1—2
26	Luton Town	(H) 0—0
29	Millwall	(H) 3—0

### October

3	Charlton Athletic	(A) 1—2
6	League Cup (3) Liverpool	(H) 2—0
10	Queen's Park Rangers	(H) 1—0
16	Hull City	(A) 0—2
21	Norwich City	(A) 0—1
24	Middlesbrough	(H) 3—0
28	League Cup (4) Fulham	(A) 0—1
31	Birmingham City	(A) 1—2

### November

7	Bristol City	(H) 2—1
14	Leicester City	(A) 1—3
18	League Cup (5)	.....
21	Oxford United (1)	(A) 0—0
28	Sheffield Wednesday	(H) 3—0

### December

5	Bolton Wanderers	(A) 3—0
9	League Cup Semi-Final	.....
12	Orient (2)	(H) 1—1
16	League Cup Semi-Final	.....
19	Sheffield United	(H) 3—0
26	Cardiff City	(A) 1—1

## 1971

### January

2	Queen's Park Rangers (3)	(A) 2—1
9	Millwall	(A) 2—2
16	Norwich City	(H) 3—2
23	F.A. Cup (4) Leeds United	(A) 0—4
30	Sheffield Wednesday	(A) 2—2

### February

6	Bolton Wanderers	(H) 3—1
13	Orient (5)	(A) 0—1
20	Oxford United	(H) 3—0
27	Birmingham City	(H) 1—2
	(League Cup Final)	

### March

6	Middlesbrough (6)	(A) 0—3
13	Leicester City	(H) .....
20	Bristol City	(A) .....
27	Blackburn Rovers (S.F.)	(H) .....

### April

3	Sunderland	(A) .....
9	.....	.....
10	Cardiff City	(H) .....
12	Portsmouth	(A) .....
13	Charlton Athletic	(H) .....
17	Queen's Park Rangers	(A) .....
24	Carlisle United	(H) .....
28	Watford	(A) .....

### May

1	Luton Town	(A) .....
8	F.A. Cup Final	.....

## FOOTBALL COMBINATION

### August

15	Crystal Palace	(A) 2—3
19	Norwich City	(A) 2—1
22	Bournemouth & B.A.	(H) 3—0
25	Chelsea	(H) 3—0
29	Ipswich Town	(A) 1—1

### September

5	Oxford United	(H) 2—5
12	Queen's Park Rangers	(A) 1—3
15	Cardiff City	(H) 2—2
19	Bristol Rovers	(H) 2—2
26	West Ham United	(A) 1—3

### October

3	Crystal Palace	(H) 2—1
10	Arsenal	(A) 0—7
14	Fulham	(A) 1—2
17	Queen's Park Rangers	(H) 1—1
20	Swansea City	(H) 0—1
31	Birmingham City	(H) 2—2

### November

7	Bristol City	(A) 2—4
14	Leicester City	(H) 2—1
21	Fulham	(H) 1—1
24	Gillingham	(A) 1—0
28	Tottenham Hotspur	(A) 0—5

### December

5	Plymouth Argyle	(H) 2—0
19	Bournemouth & B.A.	(A) 1—3

## 1971

### January

9	Norwich City	(H) 1—2
16	Chelsea	(A) 0—2
23	Southampton	(A) P
30	Tottenham Hotspur	(H) P

### February

6	Plymouth Argyle	(A) 4—2
13	Southampton	(H) 2—0
24	Cardiff City	(A) 2—1
27	Birmingham City	(A) 1—0

### March

2	Swansea City	(H) 1—4
6	Gillingham	(A) P
9	Reading	(H) 2—0
13	Leicester City	(A) .....
20	Bristol City	(H) .....
31	Oxford United	(A) .....

### April

3	Ipswich Town	(H) .....
7	Reading	(A) .....
17	Arsenal	(H) .....
20	Swansea City	(A) .....
24	Bristol Rovers	(A) .....

### May

1	West Ham United	(H) .....
---	-----------------	-----------

Copyright of The Football League Ltd. and not to be reproduced without permission.

# League table division 2

(up to and including Tuesday, 9th March, 1971)

	P	W	D	L	Goals		Pts.
					F	A	
Cardiff City	30	15	10	5	53	25	40
Hull City	31	15	10	6	42	29	40
Sheffield United	31	15	9	7	51	35	39
Luton Town	29	14	10	5	42	20	38
Leicester City	29	15	8	6	44	26	38
Middlesbrough	31	16	6	9	52	31	38
Carlisle United	31	14	10	7	47	34	38
Birmingham City	31	13	8	10	46	38	34
Norwich City	31	11	12	8	39	39	34
<b>Swindon Town</b>	<b>31</b>	<b>12</b>	<b>8</b>	<b>11</b>	<b>45</b>	<b>34</b>	<b>32</b>
Sunderland	31	11	8	12	37	40	30
Millwall	31	11	7	13	39	37	29
Sheffield Wed.	31	10	9	12	40	53	29
Oxford United	29	10	7	12	29	38	27
Orient	29	7	13	9	21	34	27
Q.P.R.	29	9	8	12	38	42	26
Watford	31	8	10	13	30	44	26
Portsmouth	29	9	7	13	37	45	25
Bristol City	30	6	8	16	33	53	20
Blackburn Rovers	31	5	10	16	28	48	20
Bolton	32	7	6	19	29	54	20
Charlton Athletic	30	4	10	16	28	51	18

## Know your football

Can you recognise these club  
badges?



(a)



(b)



(c)



(d)

Answers at foot of page.

## Key of the board

### First Section

- A—Blackpool v Leeds
- B—Crystal Palace v Arsenal
- C—Derby County v Manchester City
- D—Everton v Stoke City
- E—Huddersfield Town v Burnley
- F—Ipswich Town v Newcastle United
- G—Manchester Utd. v Nottingham F.
- H—Southampton v West Brom. Albion
- I—Tottenham Hotspur v Chelsea
- J—Wolverhampton W. v West Ham
- K—Blackburn Rovers v Cardiff City
- L—Bolton Wanderers v Millwall
- M—Carlisle United v Luton Town
- N—Charlton A. v Middlesbrough
- O—Hull City v Oxford United
- P—Orient v Birmingham City
- Q—Q.P.R. v Sheffield United
- R—Sheffield Wednesday v Norwich C.
- S—Sunderland v Portsmouth
- T—Aston Villa v Halifax Town

### Second Section

- A—Bradford City v Bury
- B—Brighton v Gillingham
- C—Bristol Rovers v Tranmere Rovers
- D—Doncaster Rovers v Wrexham
- E—Fulham v Rotherham United
- F—Mansfield Town v Torquay United
- G—Plymouth Argyle v Chesterfield
- H—Rochdale v Preston North End
- I—Shrewsbury Town v Walsall
- J—Aldershot v York City
- K—Crewe Alexandra v Northampton
- L—Darlington v Peterborough United
- M—Exeter City v Barrow
- N—Grimsby Town v Brentford
- O—Hartlepool v Bournemouth
- P—Lincoln City v Oldham Athletic
- Q—Notts County v Southport

(a) Halifax Town; (b) Gillingham; (c) Stoke City; (d) Luton Town.

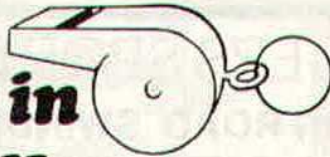
## Frank Burrows in action



**This effort by Birmingham's Trevor Francis is blocked by Frank Burrows. Francis had a great game against the Town getting both of the Birmingham goals. Frank was also in action at the other end, seen here challenging Roger Hynd and goalkeeper Kelly for this cross.**



## **the man in the middle**



### **Charles H Nicholls**

Started refereeing in 1950. Progressed through Plymouth and District League, South Western League, and the Western League to the Football League. Linesman from 1962 until 1966 and Referee since 1966.

Has officiated as Linesman in the European Cup match, B.K. Odense (Denmark) v Real Madrid, 1964, also the Football League v the Irish League 1966, and F.A. Cup Semi-Final Leicester City v West Bromwich Albion at Hillsborough in 1969.

Mr. Nicholls is married with a daughter, aged 18 years, and is a Technical Officer, Ministry of Defence (Navy).

Hobbies and interests are home decorating and golf (keen participant).

Mr. Nicholls says that although he lives in what is classed as a remote district (Plymouth), along with other Football League Linesmen, he does not mind the long distance travelling involved, especially with the improved rail facilities.

**Your team  
for Planned Savings**



#### SAVINGS ACCOUNTS

GOVERNMENT  
STOCKS

SAVE AS YOU EARN  
SCHEME

T.S.B.  
UNIT TRUST

CHEQUE  
ACCOUNTS

LIFE ASSURANCE  
LINKED SAVINGS

CASH  
DISPENSER

CHEQUE  
CARDS

SERVICE

FOREIGN  
CURRENCY

STANDING  
ORDERS

Ask for details at your local T.S.B. Office

## **TRUSTEE SAVINGS BANK**

**93 Commercial Road, Swindon**

**Telephone 23949**

## DON ROGERS SPORTS

29 FARINGDON ROAD SWINDON

Telephone 27378

Main suppliers to Swindon Town Football Club

Stockists of

All leading makes of Football Boots and Clothing  
Table Tennis, Badminton, Rugby and Hockey equipment

IN FACT THE COMPLETE SPORTS OUTFITTER

## RIMES of SWINDON

POPULAR EXCURSION TO

Fare

adult child

Sat., 20th March BRISTOL CITY dep 12.30 p.m. £0.50 £0.32

SERVICE DIRECT TO THE GROUND  
ALL SEATS NUMBERED AND RESERVED

Book now at

102 Commercial Rd., Swindon 46 Cricklade St., Cirencester  
Telephone 27113 Telephone 3479

or with any of Rimes Booking Agents

*Dobell Shearman & Co. Ltd.*

**HIGH STREET, OLD TOWN, SWINDON**

Telephone 4961

FANCY and COMMERCIAL STATIONERS

TYPEWRITERS and OFFICE EQUIPMENT

Greetings Cards for all Occasions  
from Leading Art Publishers



## W. J. CASTLE

Office and Bakery

4 and 5 MARKET STREET

**SWINDON**

Telephone 22017

Specialists—

BIRTHDAY CAKES - WEDDING CAKES

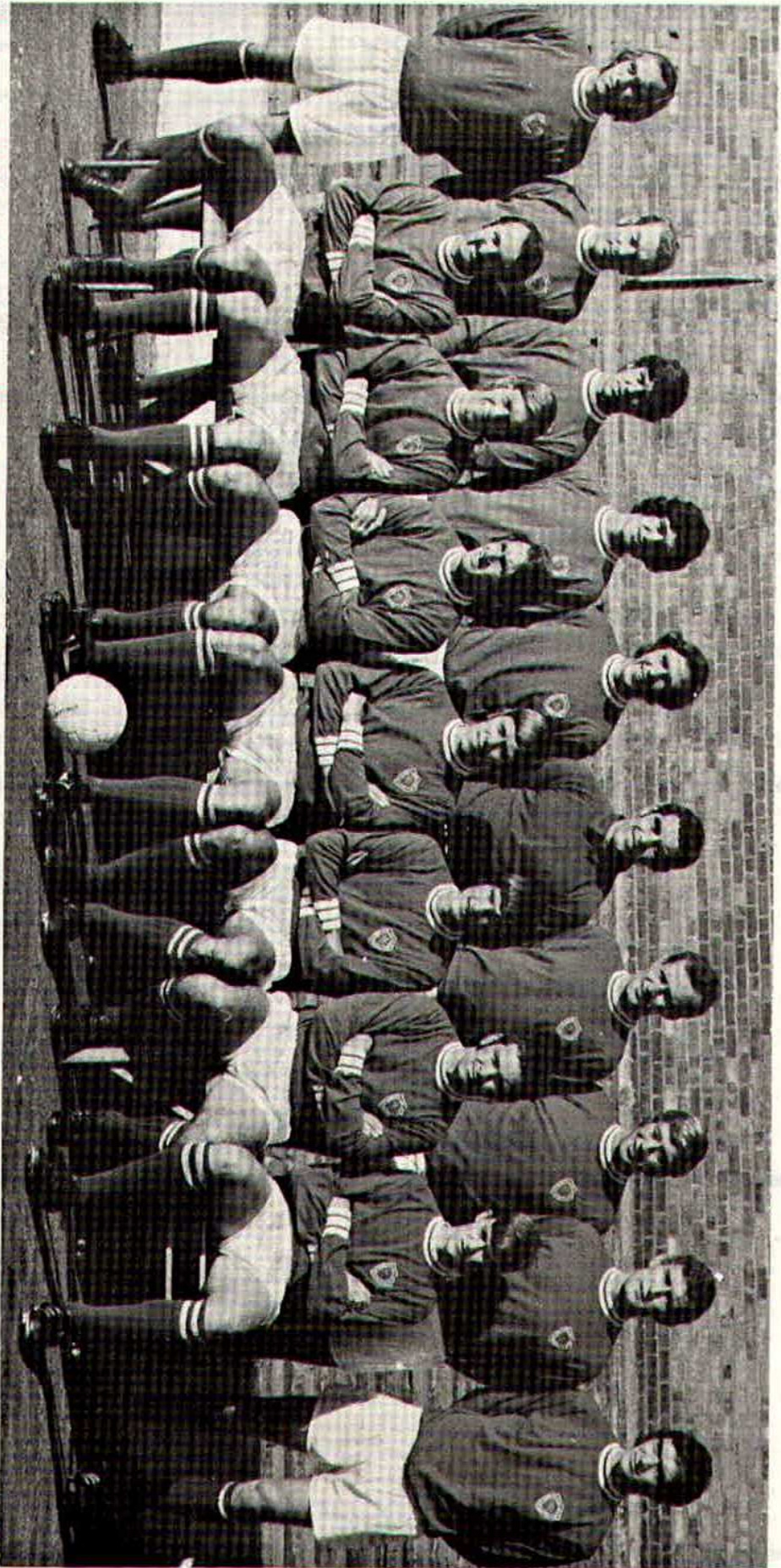
DAIRY CREAM - PASTRIES

BUNS - ROLLS - SPONGES





# Leicester City



Back row (left to right): Rodney Fern, Alan Woollett, Malcolm Manley, Joe Jopling, Malcolm Partridge, Peter Shilton, Mike Stringfellow, Graham Cross, John Sjöberg, Alistair Brown.  
Front row (left to right): Peter Rodrigues (now with Sheffield Wednesday), Steven Whitworth, Len Glover, David Nish, John Farrington, Bobby Kellard, Paul Matthews.

## HARRY LUNN

(Ex NOTTS COUNTY, PORTSMOUTH and SWINDON TOWN F.C.)

**Fish Bar and Restaurant**  
**27-28 COMMERCIAL ROAD SWINDON**

RESTAURANT open 9 a.m. to 10 p.m. for

**Snacks - Lunches - High Teas - Evening Meal**

FISH BAR open Mid-day and Evenings until 11 p.m.

## HULFORD MOTORS LIMITED

**SELF DRIVE HIRE**

Fleet of 1970/69 Fords Escorts De-Luxe  
Cortinas De-Luxe Cortinas 1600 Estate  
(Bench Seat Column Change) — Zephyr V4s

**SHRIVENHAM ROAD**

(200 yards from Football Ground)

**Telephone 4934**

Large Car Park Available

## COWLEY BROS. (Wroughton) LTD.

BUILDERS OF MODERN ATTRACTIVE  
HOUSES and BUNGALOWS

Developments at

**SWINDON**

**WROUGHTON**

**BADBURY**

Office

**28 NEWPORT STREET**  
**SWINDON**

Telephone Swindon 6870

Reserved for British Rail



**Inter-City**

# Golden Goal Competition

Tickets bearing the time in minutes and seconds will be on sale before the game – price **one shilling**. The ticket with the exact time when the **FIRST GOAL** is scored will win

## £60

The ticket bearing the time when the **LAST GOAL** is scored will win

## £10

The official announcer will be the timekeeper and he will announce the official time of both goals. Should only one goal be scored the winning ticket holder will receive £70. In the event of no goals tickets bearing no score will win £10.

A further prize of **£10** will also be given for the ticket bearing the number corresponding to the official attendance at the match.

Be sure to get your ticket – Watch for the **GOLDEN GOAL GIRLS!**

In the event that tickets bearing the exact time of goals have not been claimed the prizes will be paid to those bearing the nearest time.

## GOLDEN GOAL WINNERS

**Birmingham City (27th Feb., 1971)**  
**1st Goal (£60)** 24m 44s. Mr. W. Coupe, 16 Hobb Close, Malmesbury.

**Last Goal (£10)** 72m 16s. Mr. E. Sly, Greencroft, Eastcourt, Burbage, Marlborough.

**Attendance (£10)** 19,860. Mr. J. Tanner, 34 Kerrs Way, Wroughton.

---

## Forthcoming matches

**WEDNESDAY, 17th MARCH, 1971**

Football Combination – Kick-off 7.30 p.m.

### Swindon Town v Tottenham Hotspur

**SATURDAY, 20th MARCH, 1971**

Football Combination – Kick-off 3 p.m.

### Swindon Town v Bristol City

**SATURDAY, 27th MARCH, 1971**

Division II – Kick-off 3 p.m.

### Swindon Town v Blackburn Rovers

---

## Dates for your diary

**Wednesday, 26th May, 1971 – Swindon Town v Bologna**

**Saturday, 29th May, 1971 – Swindon Town v Sampdoria**

in the Anglo-Italian Inter-Club Competition of 1971

Last June the Swindon Town Football Club were triumphant in the first series of this European Competition and are surely worthy of your support in defence of the Competition trophy. The undermentioned table of the Italian First Division indicates the strength of our opposition and our players deserve your cheers to urge them on once again to the Final of the tournament.

### DIVISION 1

(up to and including 28th February, 1971)

	Points	Games played			Home			Away			Goals		
		Played	Won	Drawn	Lost	Won	Drawn	Lost	Won	Drawn	Lost	For	Against
Milan	30	19	11	8	0	6	4	0	5	4	0	40	14
Napoli	27	19	10	7	2	6	3	1	4	4	1	18	8
Inter	27	19	11	5	3	7	1	1	4	4	2	26	18
Juventus	22	19	9	4	6	7	1	1	2	3	5	23	17
<b>Bologna</b>	20	19	6	8	5	5	3	1	1	5	4	21	16
Roma	20	19	4	12	3	3	6	1	1	6	2	20	18
Cagliari	20	19	6	8	5	4	4	1	2	4	4	21	23
Foggia	18	19	5	8	6	4	5	1	1	3	5	23	26
<b>Sampdoria</b>	17	19	4	9	6	3	4	3	1	5	3	20	19
Torina	17	19	4	9	6	4	5	1	0	4	5	18	17
L.R. Vicenza	17	19	5	7	7	3	5	2	2	2	5	17	23
Verona	17	19	4	9	6	4	4	1	0	5	5	15	21
Fiorentina	15	19	2	11	6	1	5	4	1	6	9	18	23
Varese	15	19	1	13	5	1	8	0	0	5	5	15	21
Lazio	11	19	2	7	10	2	4	3	0	3	7	14	28
Catania	11	19	2	7	10	2	4	3	0	3	7	12	29

Italian matches finish on Sunday, 23rd May, 1971.

There are 11 games to play.

#### Goalscorers

15 goals: Boninsegna (Inter) 4 penalties.

14 goals: Prati (Milan).

12 goals: Savoldi (Bologna).

8 goals: Domenghini (Cagliari) 2 penalties.

7 goals: Bettega (Juventus); Maraschi (L.R. Vicenza) 5 penalties; Cristin (Sampdoria); Clerici (Verona).

6 goals: Villa (Milan); Amarildo (Roma) 3 penalties.

5 Goals: Chiarugi (Fiorentina) 1 penalty; Bigon e Saltutti (Foggia); Haller (Juventus); Combin (Milan); Salvi (Sampdoria).

Suppliers to the Swindon Team  
**MAY WE SUPPLY YOU?**



**EARLE**

of Chippenham Limited

MAIN

**FORD**

DEALERS

**COCKLEBURY ROAD CHIPPENHAM**

Telephone 3255

**H. HIBBERD LIMITED**

**FOR YOUR EARTH-MOVING EQUIPMENT**

*Plant Hire Contractors*



**40 NEWPORT STREET SWINDON**

Telephone Swindon 6125

# follow the robins . . .

## to Bristol City Saturday 20th March



Take the A420 and leave by Wootton Bassett, Roundabout Road first road then to Wootton Bassett. **6¼ miles**

Keep on A420 from Wootton Bassett to Lyneham and bear right on to Sutton Benger. At 1 mile on bear left and on to Chippenham. **20¼ miles**

From Chippenham junction of High Street and Bath Road. Leave by Marshfield Road A420 to Marshfield (by-pass) then on to Cold Ashton, passing T.B. 400 and traffic lights.

Now to Tog Hill, descend for 1 mile and on to Wick. Leave Wick on A420 for Warmley: Level Crossing, then on to Kingswood, St. George and on to (West Street, Bristol Bridge) Bristol.

**42½ miles**

### Admission prices at Bristol City

Grandstand 14/-; Dolman Stand 12/-.  
Tickets for these stands are available two to three weeks in advance, with correct remittance and s.a.e. enclosed.  
Enclosure 8/-, Juveniles 4/-; Covered End 7/-, Juveniles and O.A.P's 4/-; Open End 6/-, Juveniles and O.A.P's 3/-.

Route kindly supplied by R.A.C.

## 'Keeper Kelly



The Birmingham goalkeeper Mike Kelly pictured after turning a Chris Porter 'special' round the post.

---

# AKERS GARAGE LIMITED

THE STREET MOREDON SWINDON WILTSHIRE

Telephone Swindon 3457/8

main dealer for  
**VAUXHALL/BEDFORD**  
and  
Parts and Accessories  
Sales and Service

Showrooms open  
MONDAY to FRIDAY — 8 a.m. to 8 p.m.  
SATURDAY — Closed 7 p.m.  
SUNDAYS — 10 a.m. to 2 p.m. for Petrol and Viewing

---

---

## For a home win fill in this coupon NOW!

I am interested in a home on the Nythe Estate.   
Greenmeadow Estate.  Eldene Estate.

NAME \_\_\_\_\_

ADDRESS \_\_\_\_\_  
\_\_\_\_\_

We are currently building the three Swindon developments indicated on the coupon, together with other housing projects in the counties of Somerset and Dorset.

**BRADLEY ESTATES**

74 VICTORIA ROAD SWINDON

Tel: 5865



## **spectator seating in high density polyethylene**

- \* Supplied to over 40 Football League clubs
- \* Any colour. No maintenance
- \* Industrial seats for the food, electronics and pharmaceutical industries
- \* Largest supplier of spectator and industrial seating in Europe
- \* Heavy, medium and light steel fabrication
- \* Custom made production line equipment
- \* Ancillary work for industry and the building trade

FAST EFFICIENT SERVICE BY



**MARTYN LYNSHAW LTD**

**BOUNDARY WORKS - STRATTON ROAD - SWINDON - WILTS**

Telephone: 24231